



Designed for marine new generation retro-reflective tapes

MF20, MF21 SOLAS REFLECTIVE TAPE



SOLAS MAREFLEX MF20, MF21 REFLECTIVE TAPE

SOLAS

SOLAS Reflective Tapes MF-20 and MF-21 were created to enhance the visibility of life saving equipment such as lifebuoys, life jackets, life rafts. The MF-20 and MF-21 tapes have been manufactured in accordance to IMO (International Maritime Organization) Regulation A.658(16) Annex 2 and MED (Marine Equipment Directive) 96/98/EC. The role of these tapes is to increase detection during night

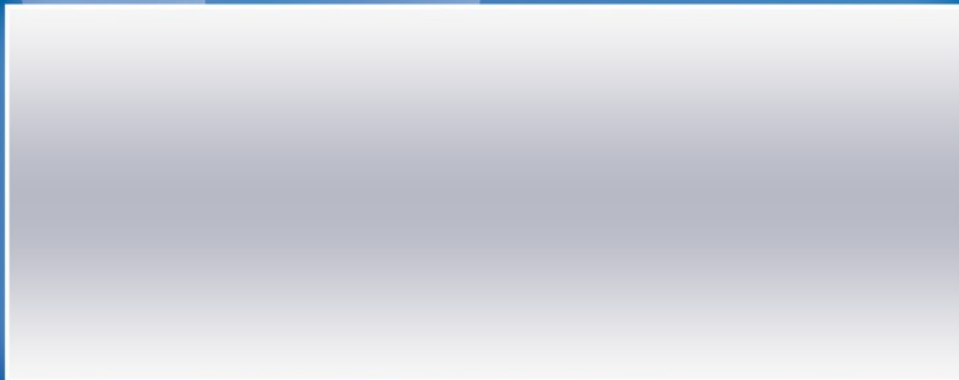
search and rescue missions and in conditions of poor visibility.

MF-20 and MF-21 tapes are designed on the basis of the glass lens reflective technology. The reflective surface is protected with an innovative Aphex coating. It assures excellent protection against sea water and various types of contamination while at the same time maintaining its reflective properties on a high level.



This is a silver, extendible, reflective material covered by a layer of Aphex with self-adhesive backing.

Mareflex MF-20 SOLAS
Reflective Tape – self-adhesive



This is a silver, reflective material covered by a layer of Aphex with polyester sewable backing.

Mareflex MF-21 SOLAS
Reflective Tape – with fabric backing



 self-adhesive surface

 sewing surface

 can be cut to any size

 all weather resistant

 do not iron

 do not dry-clean

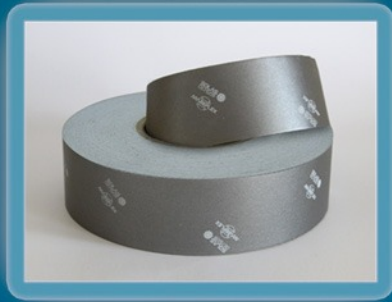
 do not machine wash

 do not bleach

 do not tumble dry

FLEXIBLE AND EASY TO BEND

The uniform structure of the tape makes it possible for it to be easily modded when applied to rough surfaces. The tape does not crack or lose its reflective properties where bent.



NO MORE LOSING OF REFLECTIVE PERFORMANCE AT THE EDGES

Mareflex SOLAS reflective tapes do not have an open cells at either of its edges. Therefore the tape cannot be penetrated by water which can destroy the reflective properties inside the cells. This allows to avoid the situation of decreasing the reflective performance and makes the product to which the tape has been applied more aesthetic for a longer time.



NO MORE TAPE STRATIFICATION

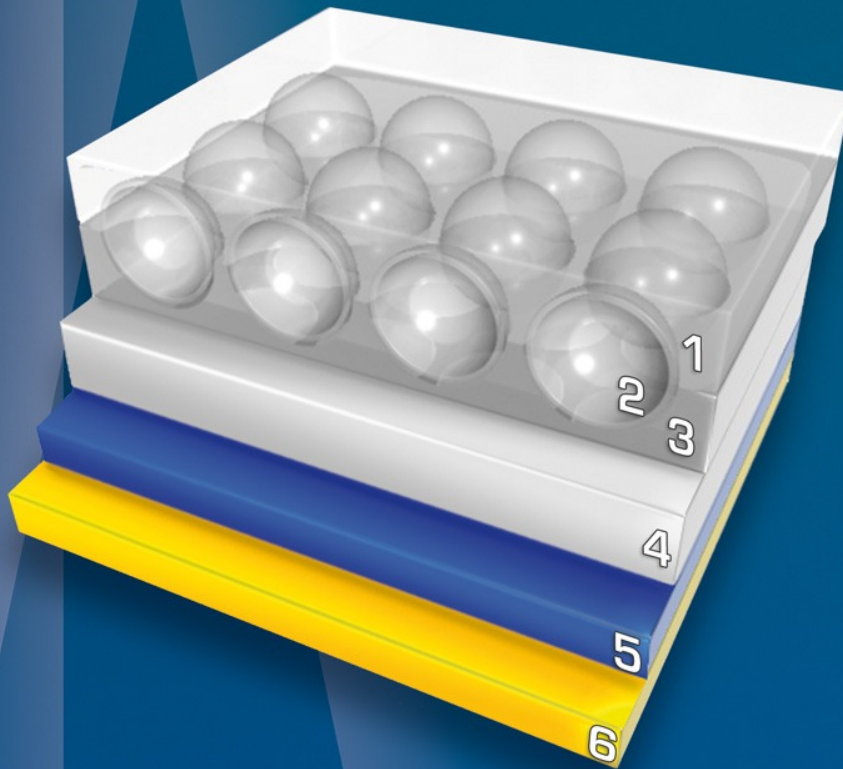
The Mareflex SOLAS reflective tapes are covered with a very thin layer of Aphex coating. The Aphex coating is firmly integrated with the reflective tape therefore the risk that it will stratify and expose the reflective layer to adverse conditions does not exist – even in difficult atmospheric conditions or because of water penetrating the edges.



UP TO 40% BRIGHTER

In popular SOLAS tapes part of the reflective layer is used up by air cells. These are formed by applying a layer of glue which creates a characteristic net. Our SOLAS tape is made on the basis of a new, innovative method which does not need the additional net. As a result the entire surface of our tape is covered by a reflective layer, which results in higher brightness.

Mareflex MF-20 SOLAS Reflective Tape



1. Apex coating
2. Glass beads and aluminum layer
3. Polymer in which the glass beads are embedded
4. Structural layer
5. Self-adhesive layer
6. Release paper



Mareflex GmbH
Osterrade 7
21031 Hamburg
Germany

Phone 1: +49 40 702964 25 (English service)
Phone 2: +49 40 702964 26 (German service)
Fax: +49 40 702964 27

E-mail: mareflex@mareflex.com
WWW: www.mareflex.com